

VZORNÍK POTAHOVÝCH LÁTEK

DINO

E

Composition/Složení/Zusammensetzung: 100% Polyester

Weight/Váha/Gewicht: 350 g/m

Width/Šířka/Breite: 140 cm

Abrasion resistance/ Oděruvzdornost/ Scheuerfestigkeit:
Martindale 100 000 cycles,
EN ISO 12947-2

Pilling/Žmolkování/Pilling:
5, UNI EN ISO 12945/1

Flammability/Ohnivzdornost/Feuersicherheit:
EN 1021/1-2, BS 5852 0&1



D6003



D6016



D6098



D7008



D8010



D8033



D4017



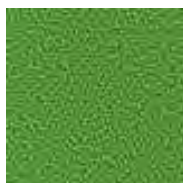
D1008



D2036



D3012



D7048



D4011

FLORIDA

E

Composition/Složení/Zusammensetzung: 100% Polyester

Weight/Váha/Gewicht: 570 g/m

Width/Šířka/Breite: 140 cm

Abrasion resistance/ Oděruvzdornost/ Scheuerfestigkeit:
Martindale 85 000 cycles,
EN ISO 12947-2

Light fastness/Stálobarevnost na světle/Lichtechtheit:
6, EN ISO 105-B02

Fastness to rubbing/Stálobarevnost v otěru/Reibechtheit:
4-5, EN ISO 105-X12

Pilling/Žmolkování/Pilling:
5, EN ISO 12945-2

Flammability/Ohnivzdornost/Feuersicherheit:
1021-1&2 + BS 7176 CLASS LOW HAZARD



F3082



F4028



F5096



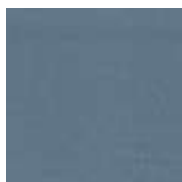
F6071



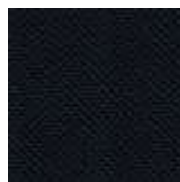
F7025



F8017



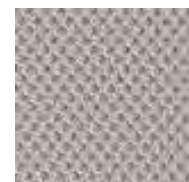
F8032



F8033



F5003



F8006

VZORNÍK POTAHOVÝCH LÁTEK

ASPECT

F

Composition/Složení/Zusammensetzung: 75% Trevira CS Flame Retardant Polyester, 25% Polyester. Non metallic dyestuffs

Weight/Váha/Gewicht: 325g/m2 ±5%

Width/Šírka/Breite: 140 cm

Abrasion resistance/ Oděruvzdornost/ Scheuerfestigkeit:

Heavy duty / 10 year guarantee
Independently certified to ≥50,000
Martindale cycles

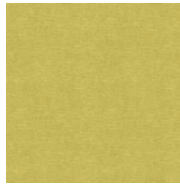
Pilling/Žmolkování/Pilling:
(ISO 105 - X12)

Flammability/Ohnivzdornost/Feuersicherheit:
BS 7176 Low Hazard

BS 5852 Section 4 ignition source 5
(over CMHR 50kg foam)



ACT31



ACT13



ACT16



ACT02



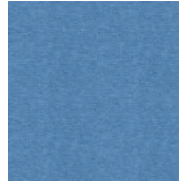
ACT15



ACT06



ACT04



ACT22



ACT30



ACT05



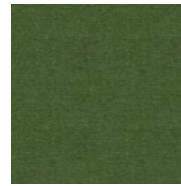
ACT23



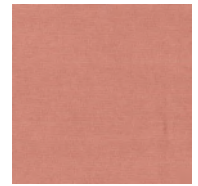
ACT29



ACT26



ACT18



ACT07



ACT24

VZORNÍK POTAHOVÝCH LÁTEK

STYLE

F

Composition/Složení/Zusammensetzung: 100% Polyester

Weight/Váha/Gewicht: 530 g/lm

Width/Šírka/Breite: 150 cm

Abrasion resistance/ Oděruvzdornost/ Scheuerfestigkeit: Martindale 120 000 cycles BS EN ISO 12947-2

Light fastness/Stálobarevnost na světle/Lichtechtheit: 5, BS EN ISO 105-B02

Fastness to rubbing/Stálobarevnost v otěru/Reibechtheit: 4 - 5, EN ISO 105x12

Pilling/Žmolkování/Pilling: 4 - 5, BS EN ISO 12945-2

Flammability/Ohnivzdornost/Feuersicherheit: norm B 3825 EN 1021 1&2



XTREME

F

Composition/Složení/Zusammensetzung: 100% Polyester Xtreme FR

Weight/Váha/Gewicht: 434 g/lm

Width/Šírka/Breite: 140 cm

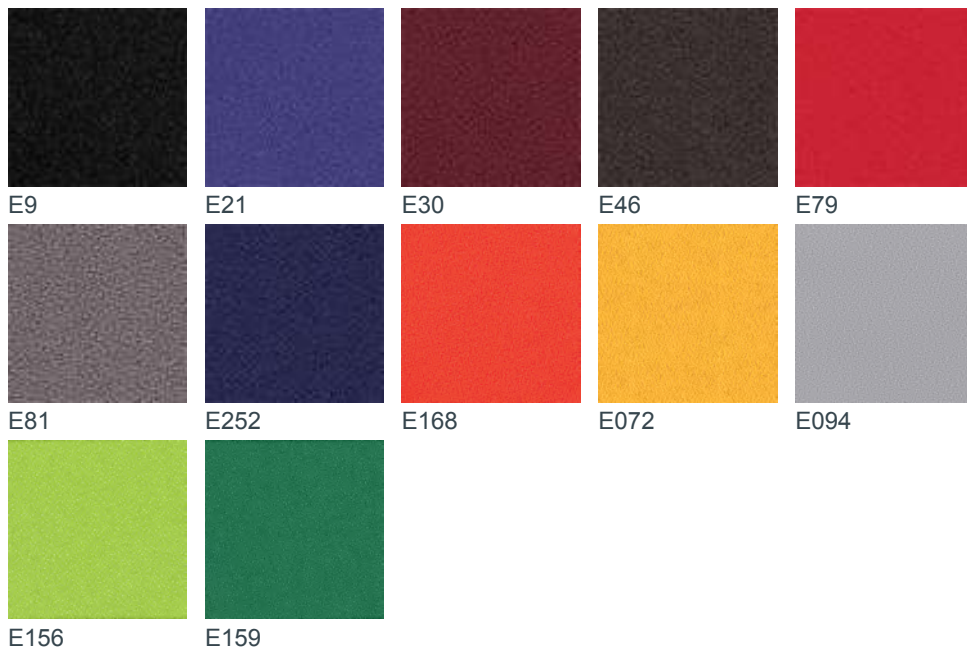
Abrasion resistance/ Oděruvzdornost/ Scheuerfestigkeit: Martindale 100 000 cycles

Light fastness/Stálobarevnost na světle/Lichtechtheit: 6, ISO 105-B02

Fastness to rubbing/Stálobarevnost v otěru/Reibechtheit: 4, ISO 105-X12

Pilling/Žmolkování/Pilling: 5, BS EN ISO 12945-2

Flammability/Ohnivzdornost/Feuersicherheit: (GB) CRIB 5, (D) B1 EN, 1021/1-2



VZORNÍK POTAHOVÝCH LÁTEK

VALENCIA

F

Composition/Složení/Zusammensetzung: Topcoat: 100% Vinyl, Backing: 100% Polyester

Weight/Váha/Gewicht: 650 g/m²

Width/Šírka/Breite: 137 cm

Abrasion resistance/ Oděruvzdornost/ Scheuerfestigkeit: Martindale 300 000 cycles, UNE EN ISO 12947

Light fastness/Stálobarevnost na světle/Lichtechtheit: 7, DIN 54004/NTC 1479

Flammability/Ohnivzdornost/Feuersicherheit: NF P 92-503/M2, BS 5852 CRIB 5, DIN 4102 B2, EN 2021 Part 1&2

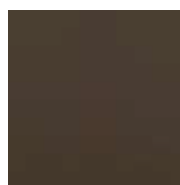
Features: Resistance to blood, urine and oil, Antifungal and antibacterial protection, Antimycotic protection



V2074



V3067



V4041



V9035



V3068



V4003



V4043

VENA

F

Composition/Složení/Zusammensetzung: 11 % PU, 66 % PVC, 23% PES

Weight/Váha/Gewicht: min 600 g/m²

Width/Šírka/Breite: 140 cm

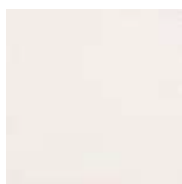
Abrasion resistance/ Oděruvzdornost/ Scheuerfestigkeit: Martindale 120 000 cycles, PN-EN344:1996

Light fastness/Stálobarevnost na světle/Lichtechtheit: 7-8, EN ISO 105-B02

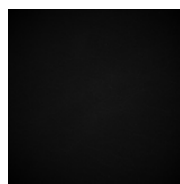
Flammability/Ohnivzdornost/Feuersicherheit: EN 1021/1-2, BS 5852:2006, Ignition source 5



V1025



V5000



V100

VZORNÍK POTAHOVÝCH LÁTEK

FAME

M

Composition/Složení/Zusammensetzung: 95% Wools of New Zealand / 5% polyamide
Weight/Váha/Gewicht: 630 g/lm

Width/Šírka/Breite: 140 cm

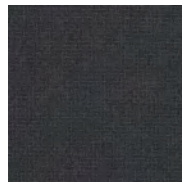
Abrasion resistance/ Oděruvzdornost/ Scheuerfestigkeit: rubs martindale (EN ISO 12947-2) 200,000

Pilling/Žmolkování/Pilling: scale 1-5, max. 5 - EN ISO 12945-2 4
Flammability/Ohnivzdornost/Feuersicherheit: BS 5852 Crib 5

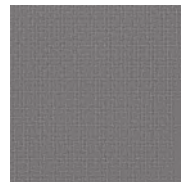
BS EN 1021 1&2



FA60003



FA60019



FA60078



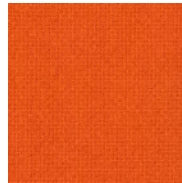
FA60999



FA61003



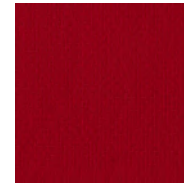
FA61060



FA63016



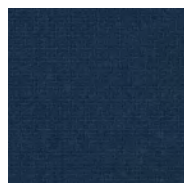
FA64058



FA64089



FA65084



FA66071



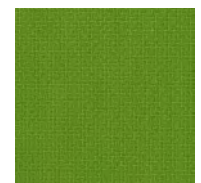
FA66075



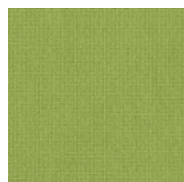
FA66133



FA67016



FA68035



FA68145

SILVERTEX

M

Composition/Složení/Zusammensetzung: Topcoat: 100% Vinyl, Backing: 100% Polyester

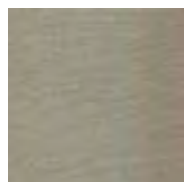
Weight/Váha/Gewicht: 685 g/lm

Width/Šírka/Breite: 140 cm

Abrasion resistance/ Oděruvzdornost/ Scheuerfestigkeit: Martindale 100 000 cycles

Flammability/Ohnivzdornost/Feuersicherheit: EN ISO 1021-1, EN ISO 1021-2

Features/Vlastnosti/Eigenschaften: Antibacterial protection, Resistance to blood, urine and oil



S0009



S2016



S3007



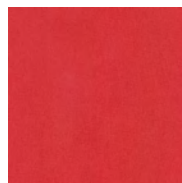
S4004



S5008



S9002



S2011



S9001



S1051

VZORNÍK POTAHOVÝCH LÁTEK

MAGIC

M

Composition/Složení/Zusammensetzung: PU - 68%, Cotton - 32%

Weight/Váha/Gewicht: 595 +/- 30g/m²

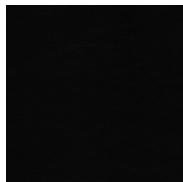
Width/Šírka/Breite: 140 cm

Abrasion resistance/ Oděruvzdornost/ Scheuerfestigkeit: Martindale 500 000 cycles

Light fastness/Stlobarevnost na světlo/Lichtechtheit: 7-8, ISO 105-B04

Flammability/Ohnivzdornost/Feuersicherheit: BS 5852 CRIB 5, DIN 4102 B2, EN 2021 Part 1&2 Features: Resistance to blood, urine and oil, Antifungal and antibacterial protection

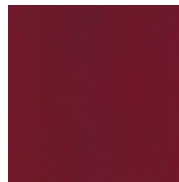
Resistance to cleaning: 70% ethanol-ISO 11640



M00110



M00800



M24784



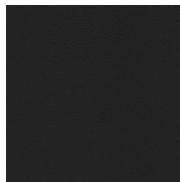
M44184



M48013



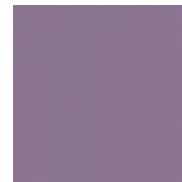
M53593



M58290



M65066



M65307



M68746



M76236



M85352

STAMSKIN ZEN

M

Composition/Složení/Zusammensetzung: Multi-layer composite

Weight/Váha/Gewicht: 780 g/m²

Width/Šírka/Breite: 140 cm

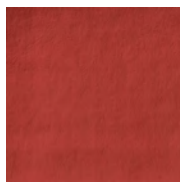
Extreme working temperatures: -20°C/+70°C

Abrasion resistance/ Oděruvzdornost/ Scheuerfestigkeit: Martindale 120 000 cycles, UNE EN ISO 12947-2

Flammability/Ohnivzdornost/Feuersicherheit: NF P 92-503/M2, DIN 53438/T2, Class 2 UNI 9175, EN 1021 Part 1&2



07477



07478



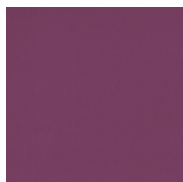
10120



20158



20162



50457



5347

VZORNÍK POTAHOVÝCH LÁTEK

OMEGA

M

Composition/Složení/Zusammensetzung:
100 % Polyester

Weight/Váha/Gewicht: 500 g/m

Width/Šírka/Breite: 160 cm

Abrasion resistance/ Oděruvzdornost/
Scheuerfestigkeit:
Martindale 100 000, EN ISO 12947-2

Light fastness/Stálobarevnost na
světlo/Lichtechtheit:
5-6, BS EN ISO 105-B02

Fastness to rubbing/Stálobarevnost v
otěru/Reibechtheit:
4-5, EN ISO 105x12

Pilling/Žmolkování/Pilling:
5, EN ISO 12945-2

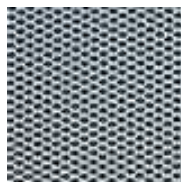
Flammability/Ohnivzdornost/Feuersicherheit:
BS 5852-0, EN 1021-1



O60120



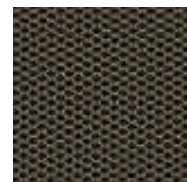
O60121



O60122



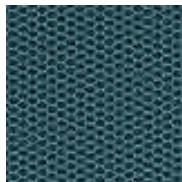
O60999



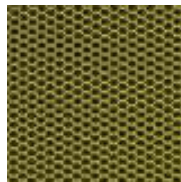
O61147



O65070



O66113



O68093

VZORNÍK POTAHOVÝCH LÁTEK

THEO @ NETS

M

Composition/Složení/Zusammensetzung: 100% Polyester

Weight/Váha/Gewicht: 480 g/lm

Width/Šírka/Breite: 160 cm

Abrasion resistance/ Oděruvzdornost/ Scheuerfestigkeit:
Martindale 70 000 cycles, UNI EN ISO 12947-2

Light fastness/Stálobarevnost na světle/Lichtechtheit:
5, UNI EN ISO 105-B02

Fastness to rubbing/Stálobarevnost v otěru/Reibechtheit:
4-5, UNI EN ISO 105x12

Pilling/Žmolkování/Pilling:
5, UNI EN ISO 12945-2

Flammability/Ohnivzdornost/Feuersicherheit: EN 1021 1&2



U60011



U60999



U68056



U63034



U64089



U66063



U65078

RHYTHM

M

Composition/Složení/Zusammensetzung: 100% polyester/polyester flame retardant

Weight/Váha/Gewicht: 525 g/lm

Width/Šírka/Breite: 160 cm

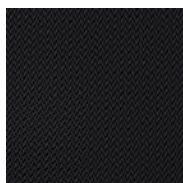
Abrasion resistance/ Oděruvzdornost/ Scheuerfestigkeit:
rubs martindale (EN ISO 12947-2) 70,000

double rubs wyzenbeek (ASTM D4157-07) (heavy duty upholstery) 100,000

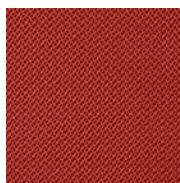
Pilling/Žmolkování/Pilling:
scale 1-5, max. 5 - EN ISO 12945-2 5
Flammability/Ohnivzdornost/Feuersicherheit:
BS EN 1021-1 cigarette

BS EN 1021-2 Match 5

BS 5852 Crib 5



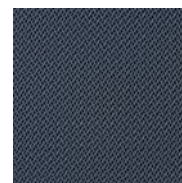
RY60999



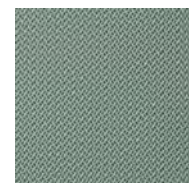
RY63067



RY66151



RY66152



RY68121



RY68123

VZORNÍK POTAHOVÝCH LÁTEK

SYNERGY

O

Composition/Složení/Zusammensetzung: 95% Virgin Wool, 5% Polyamide

Weight/Váha/Gewicht: 400g/m² 5%

Width/růžka/Breite: 140 cm

Abrasion resistance/ Oděrovzdornost/ Scheuerfestigkeit:
Heavy duty / 10 year guarantee
Independently certified to 100,000
Martindale cycles

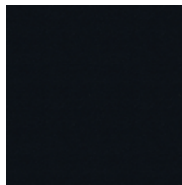
double rubs wyzenbeek (ASTM D4157-07) (heavy duty upholstery)
100,000

Light fastness:
5 (ISO 105 - B02)

Flammability/Ohnivzdornost/Feuersicherheit:
EN 1021-1&2 Cigarette & Match
NORM B 3825 & A 3800-1



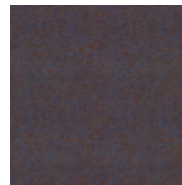
SY08



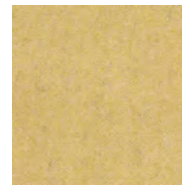
SY27



SY35



SY38



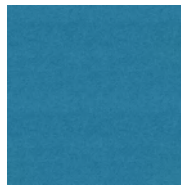
SY45



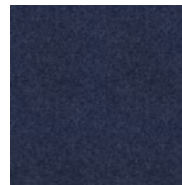
SY47



SY56



SY57



SY62



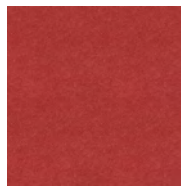
SY63



SY74



SY83



SY85

CAPTURE

O

Composition/Složení/Zusammensetzung: 85% Wools of New Zealand / 15% polyamide

Weight/Váha/Gewicht: 475g/m²

Width/růžka/Breite: 140 cm

Abrasion resistance/ Oděrovzdornost/ Scheuerfestigkeit:
rubs martindale (EN ISO 12947-2)
200,000

rubs martindale (ASTM D4966-02)
(heavy duty upholstery) 200,000

Light fastness:
scale 1-8, max. 8 - EN ISO 105-B02 5-7

Flammability/Ohnivzdornost/Feuersicherheit:
EN 1021 1&2

BS 5852 Part 1 0,1 Cigarette & match



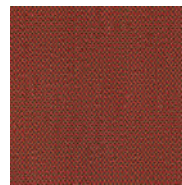
T4101



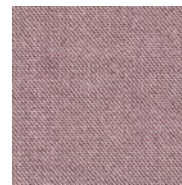
T4501



T4601



T4701



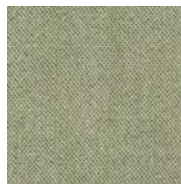
T4801



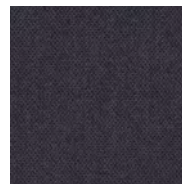
T4902



T5001



T5101



T5201

VZORNÍK POTAHOVÝCH LÁTEK

CRISP

O

Composition/Složení/Zusammensetzung:
93% Wool, 7% Polyamide

Weight/Váha/Gewicht: 460 g/m

Width/Šírka/Breite: 140 cm

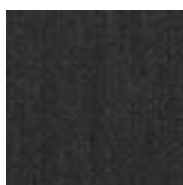
Abrasion resistance/ Oděruvzdornost/
Scheuerfestigkeit:
Martindale 200 000 cycles, EN ISO
12947-2

Pilling/Žmolkování/Pilling:
4-5, EN ISO 12945-2

Light fastness/Stálobarevnost na
světlo/Lichtechtheit:
5-7, EN ISO 105-B02

Fastness to rubbing/Stálobarevnost v
otěru/Reibechtheit:
4-5, EN ISO 105x12

Flammability/Ohnivzdornost/Feuersic
herung:
EN 1021 1 & 2, BS 5852 0 & 1, Calif.
Bull. 117, E



R4013



R4021



R4115



R4203



R4411



R4430



R4601

VZORNÍK POTAHOVÝCH LÁTEK

STYLE- STRIP

STYLE STRIP

Composition/Složení/Zusammensetzung:
100% Polyester

Weight/Váha/Gewicht: 530 g/m

Width/růžka/Breite: 150 cm

Abrasion resistance/ Oděrovzdornost/
Scheuerfestigkeit:
Martindale 110 000 cycles, BS EN
ISO 12947-2

Light fastness/Střobarevnost na
světlo/Lichtechtheit:
5, BS EN ISO 105-B02

Fastness to rubbing/Střobarevnost v
otěru/Reibechtheit:
4 - 5, EN ISO 105x12

Pilling/Žmolkování/Pilling:
4 - 5, BS EN ISO 12945-2

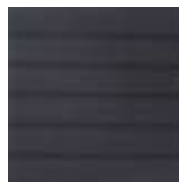
Flammability/Ohnivzdornost/Feuersic-
herung: norm B 3825, EN 1021 1&2



A64089S



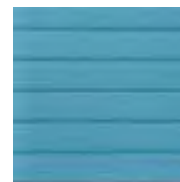
A60011S



A60999S



A68054S



A66063S

VZORNÍK POTAHOVÝCH LÁTEK

COMFORT + COM+

Composition/Složení/Zusammensetzung:
88 % Polyester / 12 %
polyurethane

Weight/Váha/Gewicht: 385 g/m

Width/šířka/Breite: 140 cm

Abrasion resistance/ Oděrovzdornost/
Scheuerfestigkeit:
Martindale 150 000 cycles, ISO
12947-2

Light fastness/Stálobarevnost na
světlo/Lichtechtheit:
5, EN ISO 105-B02

Fastness to rubbing/Stálobarevnost v
otěru/Reibeichtheit:
4 - 5, EN ISO 105x12

Pilling/Žmolkování/Pilling:
5, EN ISO 12945-2

Flammability/flammability/Feuersicher-
ung:
norm B 3825 B1, BS 5852 source 0,
EN 1021 1&2



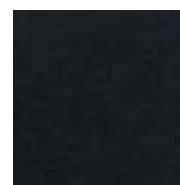
C61002



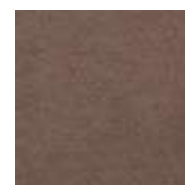
C60003



C66005



C0050



C0010

LEATHER/KŮŽE P

Type of leather/Typ kůže/Lederart:
100 % leather -
Bovine/Hovězí/Rinderleder

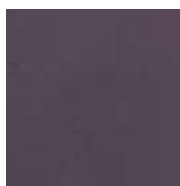
Thickness/Tloušťka/Stärke: 1-1,2 mm

Light fastness/Stálobarevnost na
světlo/Lichtechtheit:
>6, EN ISO 105-B02

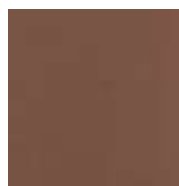
Origin/Původ/Herkunft: European raw
hides



P5110



P5250



P5400



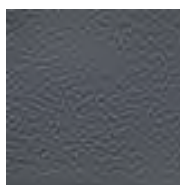
P5000



P5200



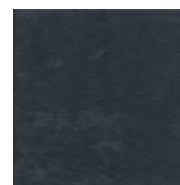
P1025



P5310



P5320



P100

PLUTO NETS

Pluto Net



Pluto WH



Pluto BL

Composition/Složení/Zusammensetzung: 100% PES

Weight/Váha/Gewicht: min 360 g/m²

Width/Šírka/Breite: 130 cm

Abrasion resistance/ Oděruvzdornost/
Scheuerfestigkeit:
Martindale 100 000 cycles

Light fastness/Stálobarevnost na
světlo/Lichtechtheit: 6 -8

Pilling/Žmolkování/Pilling: 4

PERMANENT SEATING

24/7
+



24/7 - černá



24/7 - modrá

Composition/Složení/Zusammensetzung: 50% Polyamide, 33% Pure New Wool, 10% Visil, 7% Viscose

Weight/Váha/Gewicht: 610 g/lm

Width/Šírka/Breite: 140 cm

Abrasion resistance/ Oděruvzdornost/
Scheuerfestigkeit:
Martindale 500 000 cycles

Flammability/Ohnivzdornost/Feuersicherung:

EN 1021/1-2, (GB) CRIB 5

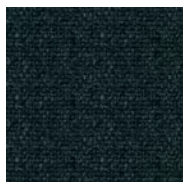
ANTISTATIC HI-TECH

Composition/Složení/Zusammensetzung:
60% Polypropylene, 29% Wool,
10% Viscose, 1% Carbon Fibre

Weight/Váha/Gewicht: 360 g/lm

Width/Šírka/Breite: 140 cm

Abrasion resistance/ Oděruvzdornost/
Scheuerfestigkeit:
Martindale 60 000 cycles
Flammability/Ohnivzdornost/Feuersic-
herung: BS 7176 CLASS LOW
HAZARD, Hi-Tech Cigarette & Match,
BS EN 1021/1 - 2:2006, Hi-Tech Low
Hazard



Antistatic

GOYAL

Composition/Složení/Zusammensetzung:
64% PL - 36% PA

Weight/Váha/Gewicht: 420 g/lm

Width/Šírka/Breite: 140 cm

Abrasion resistance/ Oděruvzdornost/
Scheuerfestigkeit:
Martindale 100 000 cycles,
UNI EN ISO 12947/2

Light fastness/Stálobarevnost na
světlo/Lichtechtheit:
6, UNI EN ISO 105-B02

Fastness to rubbing/Stálobarevnost v
otěru/Reibechtheit:
4-5, UNI EN ISO 105-X12

Pilling/Žmolkování/Pilling:
5, UNI EN ISO 12945-1



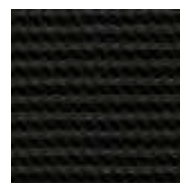
GB1501



GB4501



GB8501



GB01 BLACK

STRING

Composition/Složení/Zusammensetzung:
ung:

97 % Polyester, 2% Polyamid, 1% Lycra

Weight/Váha/Gewicht: 370 g/lm

Width/Šírka/Breite: 120 cm

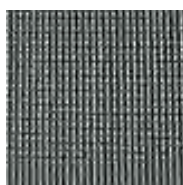
Abrasion resistance/ Oděruvzdornost/
Scheuerfestigkeit:
Martindale 30 000 cycles,
UNI EN ISO 12947/2

Light fastness/Stálobarevnost na
světlo/Lichtechtheit:
6, UNI EN ISO 105-B02:2002

Fastness to rubbing/Stálobarevnost v
otěru/Reibechtheit:
4-5, UNI EN ISO 105-X12:2002

Pilling/Žmolkování/Pilling:
4-5, UNI EN ISO 12945-2

Flammability/Ohnivzdornost/Feuersicherheit:
BS EN 1021-1:1994(cigarette),BS EN 1021-2:1994 (match)



String black



String grey

NET

Composition/Složení/Zusammensetzung:
ung: 70% Polyvinyl 30% Polyester

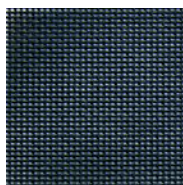
Weight/Váha/Gewicht: 560 g/lm

Width/Šírka/Breite: 190 cm

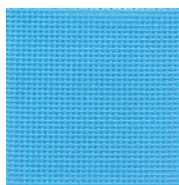
Abrasion resistance/ Oděruvzdornost/
Scheuerfestigkeit:
Martindale 100 000 cycles,
UNI EN ISO 12947 1-2

Light fastness/Stálobarevnost na
světlo/Lichtechtheit:
8, EN ISO 4892-2/6

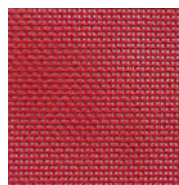
Fastness to rubbing/Stálobarevnost v
otěru/Reibechtheit:
5, EN ISO-x12:2003



Net 202



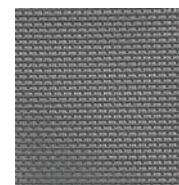
Net 206



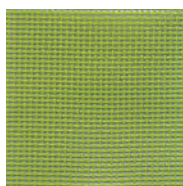
Net 222



Net 224



Net 231



Net 247

HARMONY SIDE

Harmony Side can be made of Comfort+ or Leather.



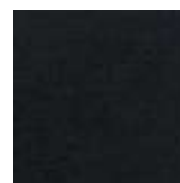
C61002



C60003



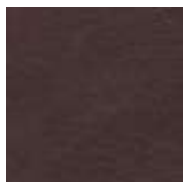
C66005



C0050



C0010



P100



P5000



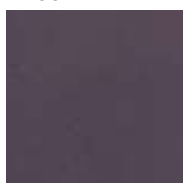
P1025



P5110



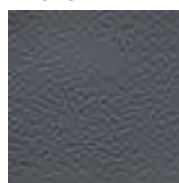
P5200



P5250



P5400



P5310



P5320

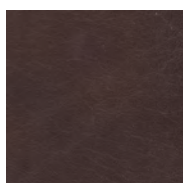
LEATHER/VENA P/V

LEATHER: Type of leather/Typ kůže/Lederart: 100 % leather - Bovine/Hovězí/Rinderleder Thickness/ Tloušťka/Stärke: 1-1,2 mm Light fastness/Stálobarevnost na světle/Lichtechtheit: >6, EN ISO 105-B02 Origin/Původ/Herkunft: European raw hides

VENA: Composition/Složení/Zusammensetzung: 11 % PU, 66 % PVC, 23% PES Weight/Váha/Gewicht: min 600 g/m2 Width/Šírka/Breite: 140 cm Abrasion resistance/ Oděruvzdornost/ Scheuerfestigkeit: Martindale 120 000 cycles, PN-EN344:1996

Light fastness/Stálobarevnost na světle/Lichtechtheit: 7-8, EN ISO 105-B02

Flammability/Ohnivzdornost/Feuersicherheit: EN 1021/1-2, BS 5852:2006, Ignition source 5



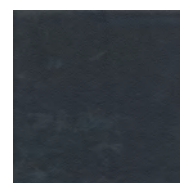
V100



V1025



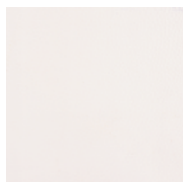
V5000



P100



P1025



P5000

VZORNÍK POTAHOVÝCH LÁTEK

BAR - CODE

BAR - CODE

Composition/Složení/Zusammensetzung:
100% Polyester

Weight/Váha/Gewicht: 570 g/lm

Width/Šířka/Breite: 140 cm

Abrasion resistance/ Oděruvzdornost/
Scheuerfestigkeit:
Martindale 85 000 cycles,
EN ISO 12947-2

Light fastness/Stálobarevnost na
světlo/Lichtechtheit:
6, EN ISO 105-B02

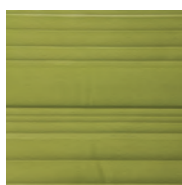
Fastness to rubbing/Stálobarevnost v
otěru/Reibechtheit:
4-5, EN ISO 105-X12

Pilling/Žmolkování/Pilling:
5, EN ISO 12945-2

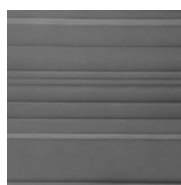
Flammability/Ohnivzdornost/Feuersic
herung:
1021-1&2 + BS 7176 CLASS LOW
HAZARD



FB 4028



FB 7025



FB 8032



FB 5003

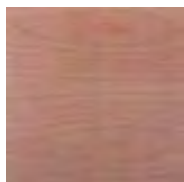


FB 8033

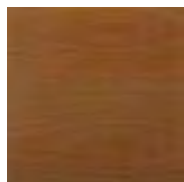
VZORNÍK POVRCHOVÝCH ÚPRAV DŘEVĚNÝCH KOMPONENTŮ



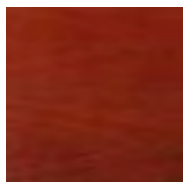
V1 - BUK
NATURAL



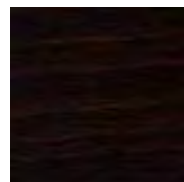
V4 - BUK
PAŘENÝ



V5 - OŘECH
SVĚTLÝ



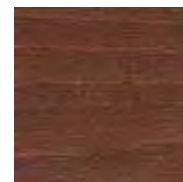
V8 - TŘEŠEŇ



W10 - WENGÉ



V2 - BŘÍZA



V6 - OŘECH
TMAVÝ



V12 - MAHAGON



V50 - ČERNÁ

VZORNÍK POVRCHOVÝCH ÚPRAV KOVOVÝCH KOMPONENTŮ



N1 - Prášková
barva black



N2 - Prášková
barva efekt Alu



N3 - Prášková
barva RAL 9007



N4 - Chrom lesk



N6 - Leštěný
hliník

VZORNÍK POVRCHOVÝCH LÁTEK LAMINÁTY



LZD - ZEBRÁNO
TMAVÉ



LZL - ZEBRÁNO
SVĚTLÉ



LCH - BUK
ČOKOLÁDA